

ADA-Stall Restroom Trailer

General Accommodations

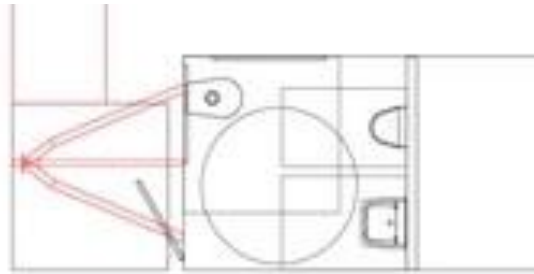
- * China Flushing Water Saver Stools (1)
- * Sinks (1)

Dimensions

- * 14' x 6'6" Trailer
- * 11' Ramp (deployment from curbside or rear of trailer)

Requirements

- * 20-amp, 110 volt dedicated electrical connection.
 - * 1 required for summer use
 - * 2 required for winter use
- * Water supply via a standard garden hose



**** Male, Female, and/or Unisex Gender Signs Available Upon Request ****



On Board Features

- * Self Contained Waste Tank
- * Self Contained Water Tank

Features

- * Air Conditioning
- * Heat
- * Hot Water System
- * Lights
- * ADA Compliant Interior Handrails
- * Winterized for Year-Round Use
- * Mirrors
- * Stereo